

RACK ACCESSORIES

Safewell provides you varieties of accessories, which are compatible with the leading brands of racks, cabinets in the market.



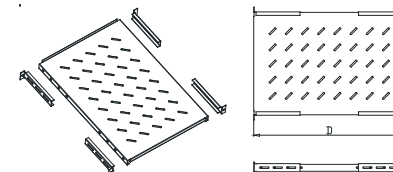
RACK SHELVES

Easy-to-install vented 19" shelf mounted with screws onto rack rails of IT equipment.



Fixed Shelf

- Four mounting ears
- depth adjustable fixed shelf.
- Material:SPCC.
- Load capacity: 120kg.
- Color:RAL9005(Black).

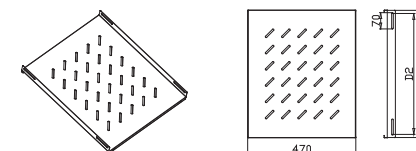


Model	Dimension W*D*H(mm)	Installation Size(mm)	Application
SWAFSHELF-350	483*350*43	465	Fixed shelf for 600mm depth 19" rack
SWAFSHELF-550	483*550*43	465	Fixed shelf for 800mm depth 19" rack
SWAFSHELF-650	483*650*43	465	Fixed shelf for 1000mm depth 19" rack
SWAFSHELF-750	483*750*43	465	Fixed shelf for 1100mm/1200mm depth 19" rack

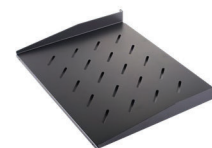


Fixed Shelf

- Four mounting holes
- fixed shelf.
- Material:SPCC.
- Load capacity: 90kg.
- Color:RAL9005(Black).

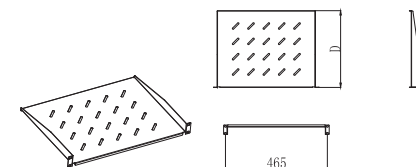


Model	Dimension W*D*H(mm)	Installation Size(mm)	Application
SWSHELF4P-350	470*350*48	470	600mm depth SNB rack
SWSHELF4P-550	470*550*48	470	800mm depth SNB rack
SWSHELF4P-650	470*650*48	470	1000mm depth SNB rack



Fixed Shelf

- Two mounting ears fixed shelf.
- Material:SPCC.
- Load capacity: 20kg.
- Color:RAL9005(Black).

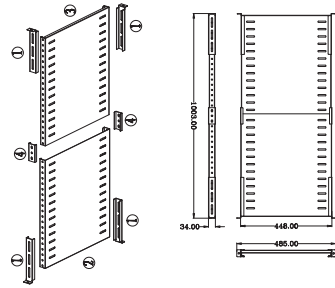


Model	Dimension W*D*H(mm)	Installation Size(mm)	Application
SW2P1USHSELF-300	483*300*43	465	450mm depth wall mount cabinet, 2-post open frame rack.
SW2P1USHSELF-350	483*350*43	465	450mm depth wall mount cabinet, 2-post open frame rack.
SW2P2USHSELF-300	483*300*88	465	450mm depth wall mount cabinet, 2-post open frame rack.
SW2P2USHSELF-350	483*350*88	465	450mm depth wall mount cabinet, 2-post open frame rack.

Fixed Shelf



- Four mounting ears depth adjustable fixed shelf.
- Material:SPCC.
- Load capacity: 70kg.
- Color:RAL9005(Black).

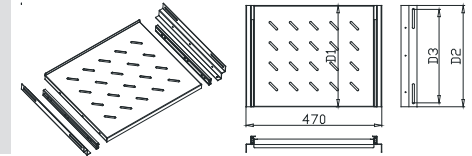


Model	Dimension W*D*H(mm)	Installation Size(mm)	Application
SWAFSHELF4POST	485*(558.8~1023)*34	465	22"-40" depth 4-post open frame rack

Sliding Shelf

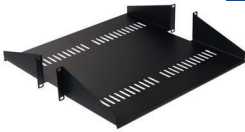


- Four mounting holes sliding shelf.
- Material:SPCC.
- Load capacity: 30kg.
- Color:RAL9005(Black).

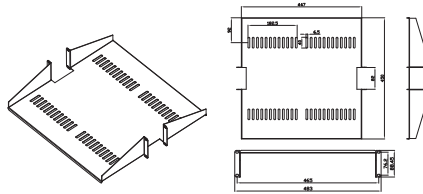


Model	Dimension W*D*H(mm)	Installation Size(mm)	Application
SWSSHSELF-350	470*350*53	470	600mm depth SNB rack
SWSSHSELF-550	470*550*53	470	800mm depth SNB rack
SWSSHSELF-650	483*650*53	470	1000mm depth SNB rack

Fixed Shelf



- Four mounting ears.
- Material:SPCC.
- Load capacity: 35kg.
- Color:RAL9005(Black).

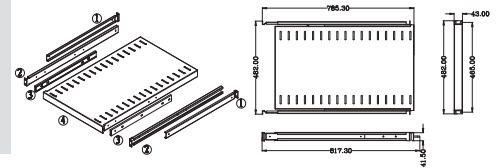


Model	Dimension W*D*H(mm)	Installation Size(mm)	Application
SW2P2USHELFCM450	483*450*88	485	SRA/2-POST customization is acceptable

Sliding Shelf



- Four mounting ears adjustable sliding shelf.
- Material:SPCC.
- Load capacity: 45kg.
- Color:RAL9005(Black).

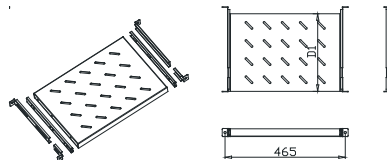


Model	Dimension W*D*H(mm)	Installation Size(mm)	Application
SWASSHELFSG-350	483*350*43	465	Sliding shelf for 600mm depth SSG/SNB/SSF/SSZ/SSN rack
SWASSHELFSG-550	483*550*43	465	Sliding shelf for 800mm depth SSG/SNB/SSF/SSZ/SSN rack
SWASSHELFSG-650	483*650*43	465	Sliding shelf for 1000mm depth SSG/SNB/SSF/SSZ/SSN rack
SWASSHELFSG-750	483*750*43	465	Sliding shelf for 1100mm/1200mm depth SSG/SNB/SSF/SSZ/SSN rack

Sliding Shelf



- Four mounting ears adjustable sliding shelf.
- Material:SPCC.
- Load capacity: 35kg.
- Color:RAL9005(Black).

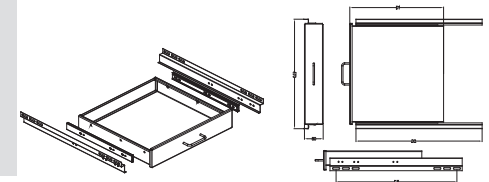


Model	Dimension W*D*H(mm)	Installation Size(mm)	Application
SWASSHELF-350	483*350*43	465	600mm depth SSG/SNB/SSF/SSZ/SSN rack
SWASSHELF-550	483*550*43	465	800mm depth SSG/SNB/SSF/SSZ/SSN rack
SWASSHELF-650	483*650*43	465	1000mm depth SSG/SNB/SSF/SSZ/SSN rack

Sliding Shelf



- Sliding drawer for network rack.
- Material:SPCC.
- Load capacity: 30kg.
- Color:RAL9005(Black).

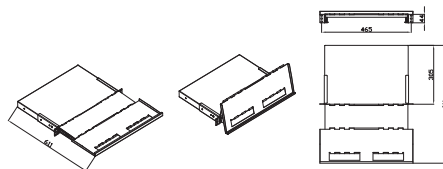


Model	Dimension W*D*H(mm)	Installation Size(mm)	Application
SWSDRAWER-650	470*650	470	1000mm depth SNB rack

Sliding Shelf



- Sliding drawer for network rack.
- Material:SPCC.
- Load capacity: 30kg.
- Color:RAL9005(Black).

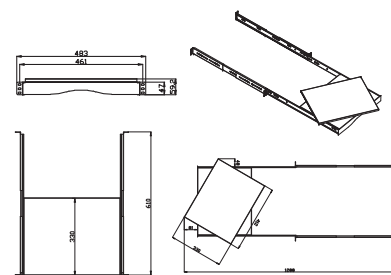


Model	Dimension W*D*H(mm)	Installation Size(mm)	Application
SWSSSHELF	465*44*611	470	1000mm depth SSG/SNB/SSF/SSN/SSZ rack

Rotatable Shelf



- Four mounting ears rotatable shelf,with adjustable depth.
- Material:SPCC.
- Load capacity: 20kg.
- Color:RAL9005(Black).

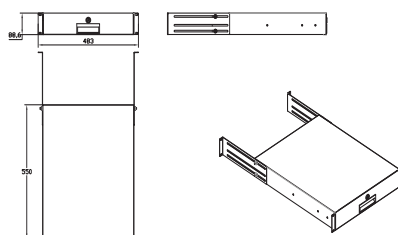


Model	Dimension W*D*H(mm)	Installation Size(mm)	Application
SWRSHELF-330	483*592*610	462	22"-40" depth 4-post open frame rack

Sliding Shelf



- It is perfect for storing stuff like software, tools, paper, supplies, cable management or patch cables.
- Material: SPCC
- Color: RAL9005



Model	Dimension W*D*H(mm)	Installation Size(mm)	Application
SWADRAWER-350	483*350*89	465	600mm depth network rack
SWADRAWER-550	483*550*89	465	800mm depth network rack
SWADRAWER-650	483*650*89	465	1000mm depth network rack

- Rack Mount Drawer mounts easily into any standard 19 inch rack or cabinet and is EIA/ECA 310-E Compliant.
- 550mm depth drawer and 650mm depth drawer including the adjustable rail, could be more stable when mounted inside of the rack or cabinet.

CABLE MANAGEMENT

For routing and binding cable on standard 19" rack, makes a complete cable mangement system when used with vertical and horizontal cable managers.

Horizontal Metal Cable Manager

- Mounts horizontally on standard 19" cabinet.
- Material:SPCC.
- Color:RAL9005(Black).

Model	Dimension W*D*H(mm)	Installation Size(mm)
SWMCABLEDUCT1U	483*42*70	465
SWMCABLEDUCT2U	483*88*70	465



Plastic Cable Manager

- Mounting horizontally on standard 19" cabinet.
- Material:Plastic and SPCC.
- Color:RAL9005(Black).

Model	Dimension W*D*H(mm)	Installation Size(mm)
SWPCABLEDUCT1U	483*42*60	465
SWPCABLEDUCT2U	483*88*60	465



Metal Horizontal Cable Ring

- Mounting horizontally on standard 19" cabinet.
- Material:SPCC.
- Color:RAL9005(Black).

Model	Dimension W*D*H(mm)	Installation Size(mm)
SWMCABLERING1U	483*42*70	465
SWMCABLERING2U	483*88*70	465



Plastic Horizontal Cable Ring

- Mounting horizontally on standard 19" cabinet.
- Material:Plastic and SPCC.
- Color:RAL9005(Black).

Model	Dimension W*D*H(mm)	Installation Size(mm)
SWPCABLERING1U	483*42*80	465
SWPCABLERING2U	483*88*80	465



■ High-density Cable Manager

- Supply high-performance cable manager for cable and fiber patch cord.
- Can open the cover from double sides through snap hinges easily.
- Material:SPCC+Plastic.
- Color:RAL9005(Black).

Model	Dimension W*D*H(mm)	Installation Size(mm)
SWCABLEMNRHD1U	483*42*92	465
SWCABLEMNRHD2U	483*88*92	465



■ Knock down Cable Ring

- Mounting horizontally on standard 19" cabinet.
- Material:fully plastic.
- Can knock down packing.
- Remove the rings can use as blank panel.
- Color:RAL9005(Black).

Model	Dimension W*D*H(mm)	Installation Size(mm)
SWKDCABLERING1U	483*42*70	465



■ Double Sides Plastic Cable Manager

- Double sides plastic cable manager.
- Mounting horizontally on standard 19" cabinet.
- Material:fully plastic.
- Color: RAL9005(Black).

Model	Dimension W*D*H(mm)	Installation Size(mm)
SWFPCABLEDUCT1UDS	483*175*48	465
SWFPCABLEDUCT2UDS	483*175*92	465



■ Single Side Plastic Cable Manager

- Single side plastic cable manager.
- Mounting horizontally on standard 19" cabinet.
- Material:fully plastic.
- Color: RAL9005(Black).

Model	Dimension W*D*H(mm)	Installation Size(mm)
SWFPCABLEDUCT1U	483*85*48	465
SWFPCABLEDUCT2U	483*85*92	465



■ Vertical Cable Manager

- Toolless mounting vertically with plastic mounting buttons.
- Material: SPCC and plastic cable rings.
- 2pcs one set.
- Color: RAL9005(Black).

Model	Dimension W*D*H(mm)	Application
SWPCABLERING1UVRT	45*95*860	Vertical tool-less mounting
SWPCABLERING2UVRT	88*98*860	Vertical tool-less mounting



■ Vertical Cable Manager

- Toolless mounting vertically with plastic mounting buttons.
- Material: SPCC and plastic cable tray.
- 2pcs one set.
- Color: RAL9005(Black).

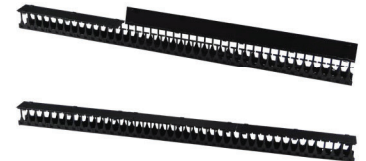
Model	Dimension W*D*H(mm)	Application
SWPCABLEDUCT1UVRT	45*70*860	Vertical tool-less mounting
SWPCABLEDUCT2UVRT	88*70*860	Vertical tool-less mounting



■ Vertical Cable Manager

- Designed for 800mm wide SSG rack.
- Easy to completely remove front cover.
- With plastic cable fingers provides high-density cabling system.
- Different height accept customized.
- Material: SPCC and plastic cable fingers.
- Color: RAL9005(Black).

Model	Height (U)	Application
SWCABLEMNVRT24-SSG	24	Vertical cabling for 24U SSG rack
SWCABLEMNVRT42-SSG	42	Vertical cabling for 42U SSG rack
SWCABLEMNVRT48-SSG	48	Vertical cabling for 48U SSG rack



■ Vertical Cable Manager

- Designed for 800mm wide SNB rack management of cable smoothing.
- Easy removable standard front cover provides cable access and manage.
- Material: SPCC and plastic cable rings.
- Color: RAL9005(Black).

Model	Height (U)	Application
SWCABLEMNVRT27-SNB	27	Vertical cabling for 27U SNB rack
SWCABLEMNVRT32-SNB	32	Vertical cabling for 32U SNB rack
SWCABLEMNVRT37-SNB	37	Vertical cabling for 37U SNB rack
SWCABLEMNVRT42-SNB	42	Vertical cabling for 42U SNB rack
SWCABLEMNVRT47-SNB	47	Vertical cabling for 47U SNB rack



■ Vertical Cable Manager

- Mounting vertically on 2-post and 4-post open frame rack.
- 3", 6" and 12" wide vertical cable tray meet your different cabling requirement.
- With plastic cable finger, provide high-density cabling system.
- Divided designation 2 pcs or 3 pcs form a set of vertical cable management depends.
- Material: SPCC and plastic.
- Color: RAL9005(Black).

Model	Size W*D*H(mm)	Application
SWCABLETRAY3CP	98*190*622	Basic density cabling, covered partially
SWCABLETRAY6CP	160*220*622	Medium density cabling, covered partially
SWCABLETRAY12CP	312*220*622	High density cabling, covered partially



COOLING SOLUTION

HEAT REMOVAL

Cooling solution accessories enhance the natural convection airflow within a cabinet when installed with standard 19" rack. It is mainly used for 19" rack-mounted equipment and data center for certain power of targeted heat.

Fan Shelf

- Fan shelf with either 2 or 4 fans.
- Cable length: 2M.
- Rated voltage: 110~120V/220V~240V.
- Input frequency: 50/60HZ.
- Material: SPCC.
- Various standards of cable plugs from different countries.
- Power switch provides on-off control.
- Color: RAL9005(Black).

Model	Dimension W*D*H(mm)	Installation Size(mm)	Qty of fans
SWFANSHELF2	483*170*44	465	2
SWFANSHELF4	483*330*44	465	4



Fan Unit

- Fan unit with 3 fans.
- Rated voltage: 110~120V/220V~240V.
- Input frequency: 50/60HZ.
- Material: SPCC.
- Color: RAL9005(Black).

Model	Dimension W*D*H(mm)	Installation Size(mm)	Qty of fans
SWFANUNIT3	483*130*44	465	3



Cooling Fan

- Size: 120*120*38 mm.
- Material: Plastic+Aluminum.
- Color: RAL9005(Black).

Model	Dimension W*D*H(mm)	Installation Size(mm)
SWFAN110V	110*120 V	50/60HZ
SWFAN220V	220*240 V	50/60HZ



1U Digital Temperature Unit with Cooling Fans

- Adjust temperature in the cabinet by intelligent control through detector
- When the temperature in the cabinet reaching the pre-set temperature, the fans start to work until below the set temperature.
- 2-way output includes 2 meters cable with IEC 320 standard power socket.
- Color: RAL9005(Black).

Model	Dimension W*D*H(mm)	Installation Size(mm)	Qty of fans
SWFANSHELFD	483*140*44	465	2



Fan Tray for Safewell SSG Series Server Rack

- Fan tray with 4 or 6 fans, with mesh guard.
- Include 2 meter cable with different standards for cable plug to choose from different countries.
- Use four self-tapping screws to install on the top panel of SSG rack.
- Color: RAL9005(Black).

Model	Dimension W*D*H(mm)	Q'ty of fans	Application
SWFANTRAY4	330*350*52	4	600/800mm depth rack
SWFANTRAY6	560*350*52	6	1000/1100mm depth rack



Fan Tray for Safewell SNB Series Network Rack

- Fan tray with 2 or 4 fans, with metal cover.
- Use four self-tapping screws to install on the top panel of SNB rack.
- Color: RAL9005(Black).

Model	Dimension W*D*H(mm)	Q'ty of fans	Application
SWSNBFANTRAY2-600	346*412*40	2	600mm depth rack
SWSNBFANTRAY4-800	546*412*40	4	800mm depth rack
SWSNBFANTRAY4-1000	746*412*40	4	1000mm depth rack



Fan Roof

- Application in Safewell SSG series server rack.
- Fan roof with 4 or 6 fans and ventilation hole area.
- 4 pcs square cable entry holes with plastic cap.
- Color: RAL9005(Black).

Model	Height (U)	Q'ty of fans	Application W*D(mm)
SWFANPANEL4-66	600*600	4	600*600 depth rack
SWFANPANEL4-68	600*800	4	600*800 depth rack
SWFANPANEL6-61	600*1000	6	600*1000 depth rack
SWFANPANEL6-88	800*800	6	800*800 depth rack
SWFANPANEL6-81	800*1000	6	800*1000 depth rack



Fan tray for Safewell Wall Mounted Cabinet

- Fan kit with 2 fans
- Rated voltage: 110-120V/220V-240V
- The roof mounted fan system maintains optimal operating temperatures in equipment racks, increase airflow in wall-mount rack enclosures
- Compatible with Wall Mount Enclosures Roof
- Material: SPCC
- Color: RAL9005

Model	Dimension W*D*H(mm)	Q'ty of fans	Application
SWWMFANTRAY2	220*105	2	all wall mounted cabinets



Bottom Plate

- Application in Safewell SSG series server rack.
- Includes 5 pcs cable entry holes.
- Color:RAL9005(Black)

Model	Height (U)	Application W*D(mm)
SWSSGBT66	600*600	600*600 SSG rack
SWSSGBT68	600*800	600*800 SSG rack
SWSSGBT61	600*1000	600*1000 SSG rack
SWSSGBT88	800*800	800*800 SSG rack
SWSSGBT81	800*1000	800*1000 SSG rack



Metal Blank Panel

- Metal blank panels from 1U to 4U allow you to close up unused U space.
- This forces incoming cool air to pass through active components with pull fans already installed in your cabinet.
- Material: SPCC
- Color:RAL9005(Black)

Model	Dimension W*D*H(mm)	Installation Size(mm)
SWM1UPANEL	483*42*10	465
SWM2UPANEL	483*88*10	465
SWM3UPANEL	483*132*10	465
SWM4UPANEL	483*175*10	465



Air Flow Management

Air flow management accessories forces incoming cool air to pass through active components with pull fans already installed in your cabinet, helping to prevent the cool airflow to flow-out, and hold back the outside airflow to flow-in.

2U Toolless Mounting Plastic Blank Panel

- Toolless snap into standard 19" cabinet.
- Logo customized
- Material:Fully plastic
- Color:RAL9005(Black)

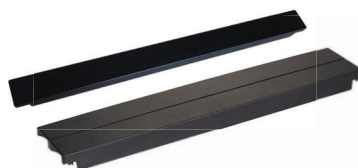
Model	Dimension W*D*H(mm)	Installation Size(mm)
SWP2UPANELB	483*86*40	465



Toolless Mounting Plastic Blank Panel

- Toolless snap into standard 19" cabinet.
- Material:Fully plastic
- Color:RAL9005(Black)

Model	Dimension W*D*H(mm)	Installation Size(mm)
SWP1UPANEL	483*88*20	465



Toolless Mounting Metal Blank Panel

- Toolless snap into standard 19" cabinet.
- Material:SPCC
- Color:RAL9005(Black)

Model	Dimension W*D*H(mm)	Installation Size(mm)
SWMF1UPANEL	483*42*20	465
SWMF2UPANEL	483*88*20	465
SWMF3UPANEL	483*132*20	465
SWMF4UPANEL	483*176*20	465



Toolless Mounting Brush Panel

- Install on standard 19" cabinet.
- Include a dense brush strip and can protect cable bundles on cabinet entry.
- Fast installation
- Material: SPCC
- Color:RAL9005(Black)

Model	Dimension W*D*H(mm)	Installation Size(mm)
SWF1UBRUSHPANEL	483*42*15	465



Brush Panel

- Install on standard 19" cabinet.
- Include a dense brush strip and can protect cable bundles on cabinet entry.
- Material: SPCC
- Color:RAL9005(Black)

Model	Dimension W*D*H(mm)	Installation Size(mm)
SW1UBRUSHPANEL	483*42*60	465



Lighting Panel

- Mounting horizontally on standard 19" cabinet.
- Material:with SPCC mounting panel.
- The standard rate of lamp is 8W.
- Color:RAL 9005(Black)

Model	Dimension W*D*H(mm)	Installation Size(mm)
SWLIGHTPANEL8W	483*44*60	465

