



FDF2382WT

Your advantages

The FDF2382WT provides the highest level of image quality with a 16:9 aspect ratio and a 23" diagonal. This particularly emphasizes the impressive viewing angle of the IPS LCD panel. Undistorted display from all angles is ideal for the widescreen format and touch operation, since all of the controls and information are equally highly visible. The FDF2382WT detects up to ten touches simultaneously and enables smooth, precise stylus input. It ignores erroneous input such as that from the ball of the user's hand.

- ✓ 23" touch colour monitor with a 16:9 aspect ratio and Full HD resolution
- ✓ Multi-touch operation (for example, for zooming, scrolling, turning, and moving)
- ✓ Smooth, precise stylus input plus detection of the ball of the user's hand
- ✓ Brightness: 260 cd/m², Contrast: 1000:1
- ✓ IPS LCD panel with wide viewing angles
- ✓ Flicker-free picture display
- ✓ DisplayPort, DVI-D, and D-sub inputs for digital and analogue connections

Features

Ergonomic writing posture on a robust interface

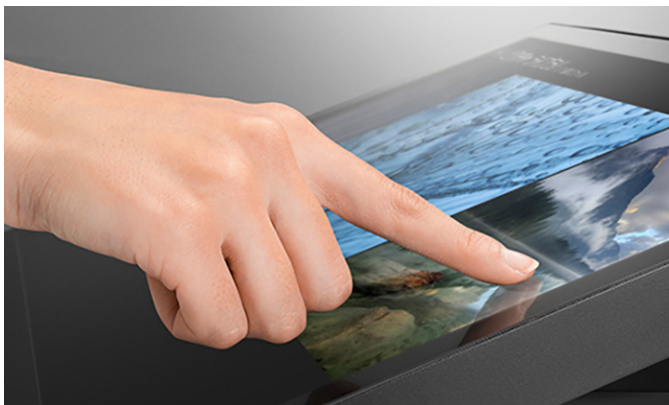
The monitor can detect up to ten simultaneous touches, which means that multiple individuals can operate the monitor at the same time. Furthermore, the touchscreen is equipped with hand ball recognition. While writing, users can place their hands or arms on the monitor without accidentally triggering an input.

With a hardness of 5H, the glass surface is insensitive to scratches and guarantees to recognize up to 50 million touches.



Frameless touchscreen

The display extends right up to the bezels – this means that the entire touch surface can be used without disruptions right up to the edges, which is particularly convenient for swiping and scrolling motions.



10-bit LUT: precise colour control

An image can only be perfect if the colours are, too. This is why EIZO office monitors have a 10-bit look-up table at a minimum, which allows the colour information to be assigned much more precisely than with conventional 8-bit LUTs. The finest colour

gradations ensure that gradients are always perfectly displayed, while also offering customised adjustment options. For example, you can adjust the white balance from 4000 K to 10000 K in 500-K intervals.



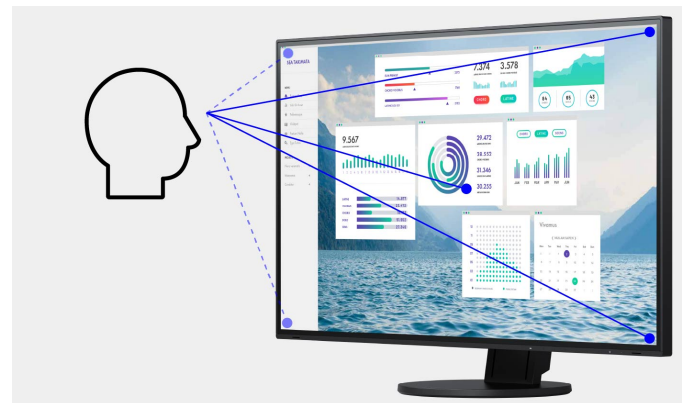
Without 10 Bit LUT



With 10 Bit LUT

Maximum image quality thanks to the IPS panel

The monitor is capable of all three key elements of excellent image quality: excellent resolution of 1920 x 1080 (Full HD) pixels, maximum contrast of 1000:1, and stable brightness of up to 260 cd/m². That means you will experience razor-sharp text contours, brilliant graphics, and clear images. Thanks to the high-quality IPS panels with LED backlight, contrasts and colours remain stable from every viewing angle.



Zero-Watt consumption thanks to the power switch

The monitors have an integrated mechanical power switch, which is extremely practical and energy-saving: If you switch off the monitor using the power switch, the device will stop consuming any power at all. Moreover, it consumes a maximum of 0.7 watt in standby mode.

Overdrive to quickly change images

Fast, faster, overdrive. The overdrive function accelerates switching time so that the grey-grey change takes only 11 ms on average. You can watch films and rapidly changing images without annoying afterglow.

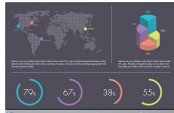
Features

Colour Mode: Optimised display at the press of a button

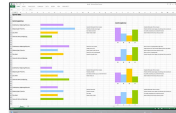
The Colour Mode modes make it easier for you to work and look at images, texts, or films. Because when choosing colour settings, it makes a difference whether you are looking at a film, editing an image, surfing the net, or writing texts. You can configure the respective presets for brightness, gamma correction, and colour temperature at the press of a button.



sRGB



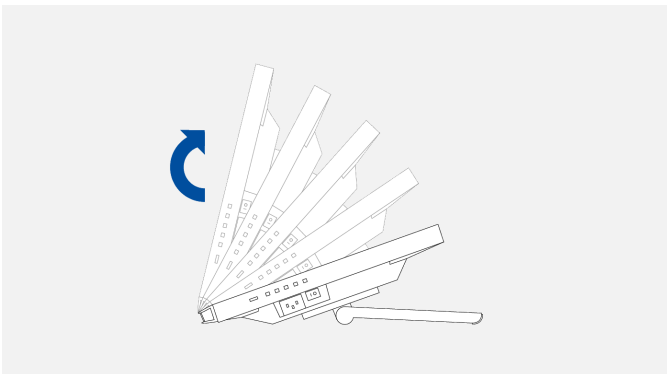
User 1



User 2

Reclining stand

The equipped stand provides flexible positioning to allow the monitor to rest on your desk like a laptop and recline back to your desired angle. This makes it easy to place the monitor in the ideal position for comfortable use in any environment.



Tilt by moving the base: 17° - 70°

Specification

General

Item no.	FDF2382WT
Case color	Black
Areas of application	Industry, Office, Video surveillance systems
Product line	DuraVision
EAN	4995047050872

Display

Screen size [in inches]	23
Screen size [in cm]	58
Format	16:9
Viewable image size (width x height)	509.2 x 286.4
Ideal and recommended resolution	1920 x 1080 (Full HD)
Pixel pitch [mm]	0.265 x 0.265
Resolution supported	1920 x 1080 (Full HD), 1680 x 1050, 1280 x 1024, 1024 x 768, 800 x 600, 720 x 400, 640 x 480
Panel technology	IPS
Max. viewing angle horizontal	178 °
Max. viewing angle vertical	178 °
Number of colours or greyscale	16.7 million colours (display port, 8 Bit), 16.7 million colours (DVI, 8 Bit), 16.7 million colours (D-Sub, 8 Bit)
Colour palette/look-up table	1.06 billion colour tones / 10 Bit
Max. colour space (typical)	sRGB
Max. brightness (typical) [in cd/m ²]	260
Max. dark room contrast (typical)	1000:1
Typical response time [grey/grey alternation]	11 ms
Max. refresh rate [in hertz]	60
Backlight	LED

Features & control

Preset colour/greyscale modes	sRGB, 2x free modes for user selection
HDCP Decoder	✓
Input signal identification	✓
Built-in speakers	✓
OSD language	de, en, fr, es, it, se, ja, zh
Adjustment options	Brightness, Contrast, Gamma, All EcoView functions, Colour saturation, Colour temperature, Colour Mode, Colour tone, Signal input, Overdrive, Resolution, Audio source, Smoothing, OSD language, Interpolation, Volume, Touch function On/Off
Integrated power unit	✓
Touchscreen	✓
Touch panel type	Projected capacitive (PCAP)
Touch compatible OS	Windows 10, Windows 8.1 (64-bit/32-bit), Windows 7 (64-bit/32-bit)
Touch points	10

Ports

Touch port	USB
Signal inputs	DisplayPort, DVI-D, D-sub
USB hub	1 Up-/ 2 Down-Stream, Rev. 2.0, 1 USB-Port Monitor Control
Video signal	DisplayPort, DVI (TMDS), RGB Analog
Control port	USB-Protocol
Sync formats	Separate
Audio input	3.5 mm stereo jack, DisplayPort
Audio output	3.5 mm stereo jack

Certification & standards

Certification	CE, C-Tick, CB, cTÜVus, FCC-B, CAN ICES-3 (B), TÜV/S, VCCI-B, RoHS, WEEE, CCC, GOST-R
---------------	---

Warranty

Warranty and service	3 years
----------------------	---------

Electric data

Power consumption (typical) [in watt]	14
Maximum Power Consumption [in watt]	42
Power Save Mode [in watt]	0.7
Power consumption off [in watt]	0
Energieeffizienzklasse	F
Energy consumption/1000h [in kWh]	21
Power supply	AC 100-120 V / 200-240 V, 50/60 Hz

Dimensions & weights

Dimensions [mm]	556,7 x 144,9-353,9 x 216,3-401,3
Weight [in kilograms]	6.6
Dimensions without stand [mm]	556,7 x 339,2 x 54
Weight without stand [in kilograms]	6
Housing dimension details	Dimension drawing (PDF)
Incline forward/backward	17 ° / 70 °
Pivot	15°-17°
Hole spacing	VESA standard 100 x 100 mm

Software & accessories

Additional supply	Power cord, Signal cable DisplayPort - DisplayPort, Signal cable DVI-D - DVI-D, USB 2.0 cable, Audio cable, Quick guide, EIZO LCD Utility Disk (incl. PDF manual), Cover, Cleaning cloth
Accessories	EIZO ScreenCleaner (for the best possible clean without scratching the monitor), TP5 (Touch panel pointers)